

\$325,000 - 14411 16 Street, Edmonton

MLS® #E4403292

\$325,000

0 Bedroom, 0.00 Bathroom,
Single Family on 0.00 Acres

Fraser, Edmonton, AB

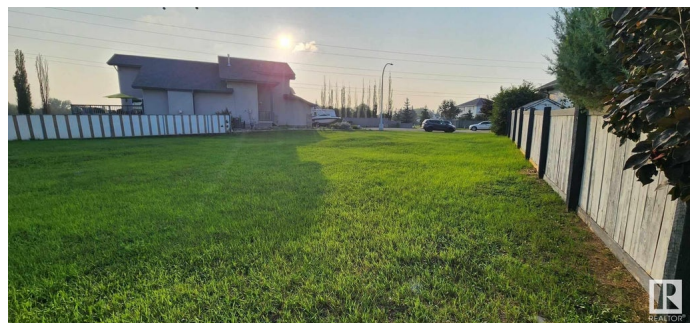
Don't miss this rare chance to own a prime piece of real estate in the highly sought-after Fraser community! This exceptional property features a generous 742 sq m pie-shaped lot, perfectly situated at the end of a tranquil cul-de-sac with stunning river valley views. As the last available lot in Phase One, this is your unique opportunity to build your dream home surrounded by lush green space and just steps from an off leash dog park and river valley walking paths. Enjoy proximity to two excellent golf courses and a variety of amenities, all just minutes from the Henday. This is your chance to create your own slice of paradise. Act now and make your dream home a reality!

Essential Information

MLS® #	E4403292
Price	\$325,000
Bathrooms	0.00
Acres	0.00
Type	Single Family
Sub-Type	Vacant Lot/Land
Status	Active

Community Information

Address	14411 16 Street
Area	Edmonton



Subdivision Fraser
City Edmonton
County ALBERTA
Province AB
Postal Code T5Y 2V1

Exterior

Exterior Features Backs Onto Park/Trees, Cul-De-Sac, Fenced, Golf Nearby, Level Land, Playground Nearby, Private Setting, Public Swimming Pool, Public Transportation, River Valley View, River View, Schools, Shopping Nearby, Ski Hill Nearby

Additional Information

Date Listed August 23rd, 2024
Days on Market 201
Zoning Zone 35

DATA IS DEEMED RELIABLE BUT IS NOT GUARANTEED ACCURATE BY THE REALTORS® ASSOCIATION OF EDMONTON. COPYRIGHT 2025 BY THE REALTORS® ASSOCIATION OF EDMONTON. ALL RIGHTS RESERVED. Trademarks are owned or controlled by the Canadian Real Estate Association (CREA) and identify real estate professionals who are members of CREA (REALTOR®, REALTORS®) and/or the quality of services they provide (MLS®, Multiple Listing Service®)

Listing information last updated on March 12th, 2025 at 9:02pm MDT