

\$849,999 - 22 3466 Keswick Boulevard, Edmonton

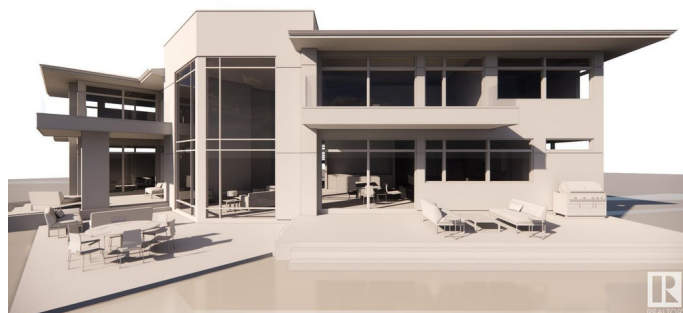
MLS® #E4414619

\$849,999

0 Bedroom, 0.00 Bathroom,
Condo / Townhouse on 0.00 Acres

Keswick Area, Edmonton, AB

Presenting Lot #22 at The Banks in Hendriks Point, Keswick on the River. This 13,584 sqft estate lot features a 72' building pocket and is situated on a quiet street backing onto a natural reserve and the North Saskatchewan River, offering exceptional privacy. The Banks at Keswick is an exclusive community with high architectural standards, ensuring quality and elegance. This lot is outside the main gates and is fully fenced, with the option to build a private gate to the property. It's a quick commute to amenities such as golf courses, walking trails, parks, skiing, schools, restaurants and shopping. The Edmonton International Airport is only a 20 minute drive. Building plans specifically designed for this lot are available for purchase. Embrace the opportunity to create your dream home in this prestigious and serene location.



Essential Information

MLS® #	E4414619
Price	\$849,999
Bathrooms	0.00
Acres	0.00
Type	Condo / Townhouse
Sub-Type	Vacant Lot/Land
Status	Active

Community Information

Address	22 3466 Keswick Boulevard
Area	Edmonton
Subdivision	Keswick Area
City	Edmonton
County	ALBERTA
Province	AB
Postal Code	T6W 3S4

Exterior

Exterior Features Airport Nearby, Backs Onto Park/Trees, Fenced, Golf Nearby, Level Land, Park/Reserve, Private Setting, Schools, Shopping Nearby, Ski Hill Nearby, Treed Lot, See Remarks

Additional Information

Date Listed	November 25th, 2024
Days on Market	129
Zoning	Zone 56
Condo Fee	\$328

DATA IS DEEMED RELIABLE BUT IS NOT GUARANTEED ACCURATE BY THE REALTORS® ASSOCIATION OF EDMONTON. COPYRIGHT 2025 BY THE REALTORS® ASSOCIATION OF EDMONTON. ALL RIGHTS RESERVED. Trademarks are owned or controlled by the Canadian Real Estate Association (CREA) and identify real estate professionals who are members of CREA (REALTOR®, REALTORS®) and/or the quality of services they provide (MLS®, Multiple Listing Service®)

Listing information last updated on April 2nd, 2025 at 11:02pm MDT