

Courtesy Of Marty Smayda Of RE/MAX Real Estate

\$180,000 - 2210 320 Clareview Station Drive, Edmonton

MLS® #E4417062

\$180,000

2 Bedroom, 2.00 Bathroom, 830 sqft
Condo / Townhouse on 0.00 Acres

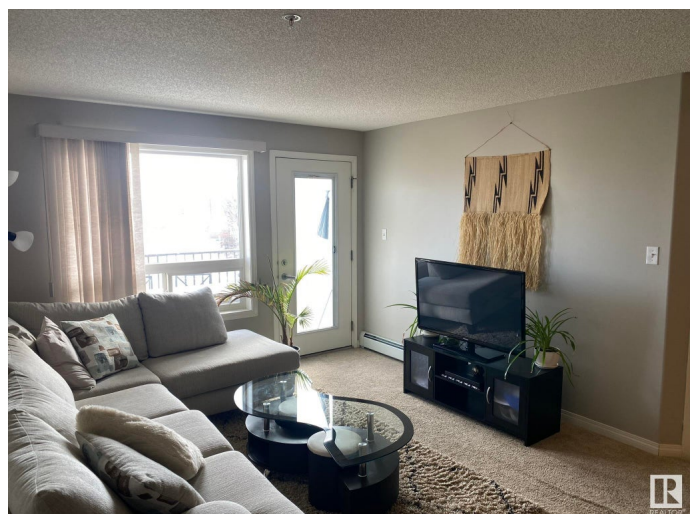
Clareview Town Centre, Edmonton, AB

Featuring Maple Cabinets, Kitchen Island, 2 Parking Stalls, Feature Wall, Expensive Faucets, Luxury Carpeting, Microwave Hoodfan, Elegant Window Coverings, Large Balcony and more. This 2 Bedroom, 2 Bathroom home is immaculate! Includes walk-through closets, full 3 piece bathroom. Lots of storage space and in-suite stacked laundry. Directly across from LRT Station!! Close to Clareview Community Centre, Shopping, Schools, Theatres, Restaurants, LRT, Golfing, Hockey Arenas, Indoor Soccer Pitches, River Valley Parks.

Built in 2007

Essential Information

MLS® #	E4417062
Price	\$180,000
Bedrooms	2
Bathrooms	2.00
Full Baths	2
Square Footage	830
Acres	0.00
Year Built	2007
Type	Condo / Townhouse
Sub-Type	Lowrise Apartment
Style	Single Level Apartment
Status	Active



Community Information

Address	2210 320 Clareview Station Drive
Area	Edmonton
Subdivision	Clareview Town Centre
City	Edmonton
County	ALBERTA
Province	AB
Postal Code	T5Y 0E5

Amenities

Amenities	No Animal Home, No Smoking Home, Parking-Visitor
Parking	2 Outdoor Stalls

Interior

Interior Features	ensuite bathroom
Appliances	Dishwasher-Built-In, Dryer, Microwave Hood Fan, Refrigerator, Stove-Electric
Heating	Baseboard, Natural Gas
# of Stories	4
Stories	1
Has Basement	Yes
Basement	None, No Basement

Exterior

Exterior	Wood, Vinyl
Exterior Features	Public Swimming Pool, Public Transportation, Schools, Shopping Nearby
Roof	Asphalt Shingles
Construction	Wood, Vinyl
Foundation	Concrete Perimeter

Additional Information

Date Listed	January 4th, 2025
Days on Market	89
Zoning	Zone 35
Condo Fee	\$421

DATA IS DEEMED RELIABLE BUT IS NOT GUARANTEED ACCURATE BY THE REALTORS® ASSOCIATION OF EDMONTON. COPYRIGHT 2025 BY THE REALTORS® ASSOCIATION OF EDMONTON. ALL RIGHTS RESERVED. Trademarks are owned or controlled by the Canadian Real Estate Association (CREA) and identify real estate professionals who are members of CREA (REALTOR®, REALTORS®) and/or the quality of services they

provide (MLS® , Multiple Listing Service®)

Listing information last updated on April 3rd, 2025 at 3:47pm MDT