

\$555,000 - 7852 Jasper Avenue, Edmonton

MLS® #E4417329

\$555,000

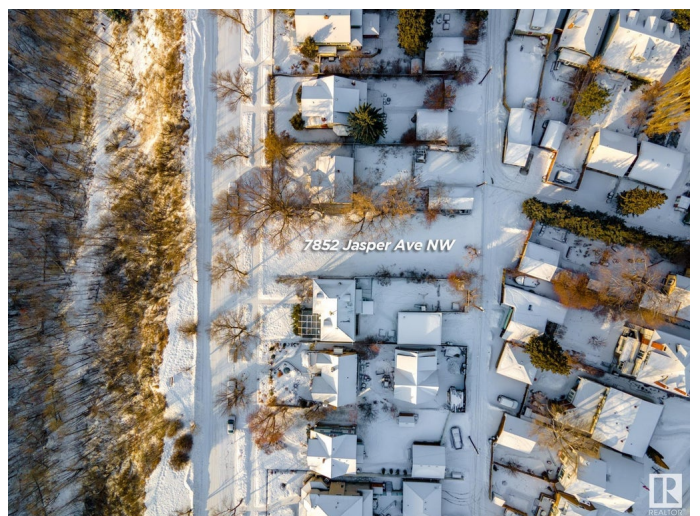
0 Bedroom, 0.00 Bathroom,
Single Family on 0.00 Acres

Cromdale, Edmonton, AB

****PLATINUM PROPERTY!**** Discover an unparalleled opportunity to build your dream home in the heart of Edmonton's historic Viewpoint neighborhood. This generous 50' x 150' lot offers breathtaking views of the city skyline and the iconic river valley. Imagine waking up to Edmonton's natural beauty, with easy access to the extensive network of walking and biking trails, including the serene Kinnaird Park. Positioned for convenience, this location lets you walk or bike to downtown hotspots like the ICE District, vibrant farmers' markets, cultural gems like the museum, and so much more. With its unbeatable combination of stunning vistas and urban accessibility, this property is perfect for those relocating to build a one-of-a-kind home and seeking a blend of natural beauty and city living.

Essential Information

MLS® #	E4417329
Price	\$555,000
Bathrooms	0.00
Acres	0.00
Type	Single Family
Sub-Type	Vacant Lot/Land
Status	Active



Community Information

Address	7852 Jasper Avenue
Area	Edmonton
Subdivision	Cromdale
City	Edmonton
County	ALBERTA
Province	AB
Postal Code	T5H 3R9

Exterior

Exterior Features Back Lane, Flat Site, River Valley View, River View, View Downtown, See Remarks

School Information

Elementary	NORWOOD SCHOOL
Middle	HIGHLANDS SCHOOL
High	EASTGLEN SCHOOL

Additional Information

Date Listed	January 7th, 2025
Days on Market	65
Zoning	Zone 09

DATA IS DEEMED RELIABLE BUT IS NOT GUARANTEED ACCURATE BY THE REALTORS® ASSOCIATION OF EDMONTON. COPYRIGHT 2025 BY THE REALTORS® ASSOCIATION OF EDMONTON. ALL RIGHTS RESERVED. Trademarks are owned or controlled by the Canadian Real Estate Association (CREA) and identify real estate professionals who are members of CREA (REALTOR®, REALTORS®) and/or the quality of services they provide (MLS®, Multiple Listing Service®)

Listing information last updated on March 13th, 2025 at 1:47pm MDT