

Courtesy Of Jesse Leggo Of Initia Real Estate

\$209,900 - 363 13441 127 Street, Edmonton

MLS® #E4417375

\$209,900

2 Bedroom, 1.00 Bathroom, 840 sqft

Condo / Townhouse on 0.00 Acres

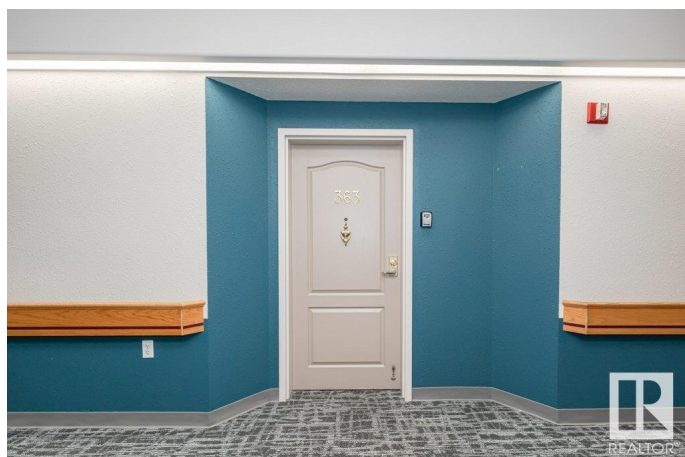
Kensington, Edmonton, AB

LUXURY adult living at Shepherdâ€™s Place in Kensington! BRIGHT and CLEAN 2 bedroom condo in 55+ complex. SPACIOUS bedrooms, a LARGE 4 piece bathroom and fully equipped white kitchen with walk-in pantry. Adjacent open-concept dining and living areas with HUGE windows. Patio door leads to the 3rd floor balcony that overlooks the PRIVATE beautifully maintained courtyard. Completely carpet-free and offers in-suite laundry, this condo is move-in ready. Indoor access to other buildings in the complex as well as several amenities including social spaces and activities, exercise equipment, and dining. Conveniently situated close to public transit the Yellowhead and 137 avenue.

Built in 1998

Essential Information

MLS® #	E4417375
Price	\$209,900
Bedrooms	2
Bathrooms	1.00
Full Baths	1
Square Footage	840
Acres	0.00
Year Built	1998
Type	Condo / Townhouse



Sub-Type	Lowrise Apartment
Style	Single Level Apartment
Status	Active

Community Information

Address	363 13441 127 Street
Area	Edmonton
Subdivision	Kensington
City	Edmonton
County	ALBERTA
Province	AB
Postal Code	T5L 5B6

Amenities

Amenities	Detectors Smoke, No Animal Home, No Smoking Home, Parking-Visitor, Barrier Free Home
Parking	Stall

Interior

Appliances	Dishwasher-Built-In, Dryer, Refrigerator, Stove-Electric, Washer
Heating	Hot Water, Natural Gas
# of Stories	4
Stories	1
Has Basement	Yes
Basement	None, No Basement

Exterior

Exterior	Wood, Stucco
Exterior Features	Picnic Area, Public Transportation, Shopping Nearby
Roof	Asphalt Shingles
Construction	Wood, Stucco
Foundation	Concrete Perimeter

Additional Information

Date Listed	January 8th, 2025
Days on Market	84
Zoning	Zone 01
Condo Fee	\$526

DATA IS DEEMED RELIABLE BUT IS NOT GUARANTEED ACCURATE BY THE REALTORS® ASSOCIATION OF

EDMONTON. COPYRIGHT 2025 BY THE REALTORS® ASSOCIATION OF EDMONTON. ALL RIGHTS RESERVED. Trademarks are owned or controlled by the Canadian Real Estate Association (CREA) and identify real estate professionals who are members of CREA (REALTOR®, REALTORS®) and/or the quality of services they provide (MLS®, Multiple Listing Service®)

Listing information last updated on April 2nd, 2025 at 2:32am MDT