

Courtesy Of Kerry Singh Of Century 21 Masters

\$488,000 - 10845 65 Avenue, Edmonton

MLS® #E4418636

\$488,000

4 Bedroom, 2.50 Bathroom, 926 sqft
Single Family on 0.00 Acres

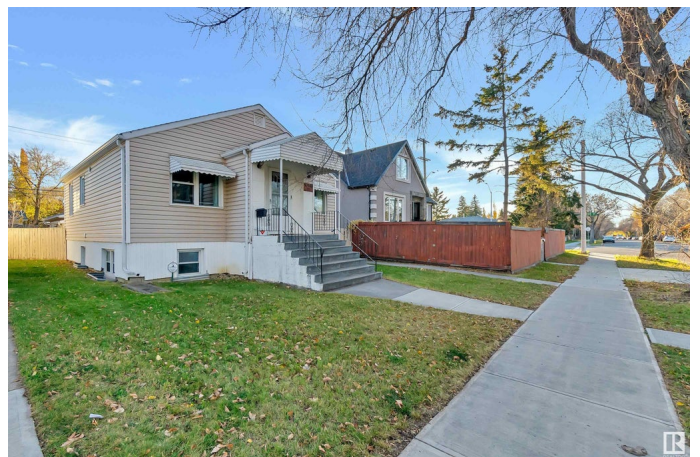
Allendale, Edmonton, AB

Welcome to Allendale! This charming 927 square foot bungalow offers a perfect blend of modern updates & classic charm, situated on a picturesque tree-lined street. Enjoy the comfort of a fully renovated home in a desirable neighbourhood. Ideally located with close proximity to the U of A & vibrant Whyte Avenue, this home offers an array of shops, restaurants, & cultural attractions just moments away. Recent upgrades include a new roof for the house in 2019, & updated roofs for both the garage & shed in 2023, full basement renovation Jan 2025. Step outside to a large private yard complete with a covered patio, perfect for entertaining or enjoying quiet evenings outdoors. An oversized double detached garage provides ample space for vehicles & storage. Situated on a generous 477 square meter lot & zoned RSM by the City of Edmonton, this property offers flexibility for future developments. This is not just a house; it's a lifestyle opportunity in one of Edmonton's most desirable neighborhoods.

Built in 1950

Essential Information

MLS® #	E4418636
Price	\$488,000
Bedrooms	4



Bathrooms	2.50
Full Baths	2
Half Baths	1
Square Footage	926
Acres	0.00
Year Built	1950
Type	Single Family
Sub-Type	Detached Single Family
Style	Bungalow
Status	Active

Community Information

Address	10845 65 Avenue
Area	Edmonton
Subdivision	Allendale
City	Edmonton
County	ALBERTA
Province	AB
Postal Code	T6H 1V8

Amenities

Amenities	Off Street Parking, On Street Parking, No Animal Home, No Smoking Home, Patio
Parking	Double Garage Detached

Interior

Interior Features	ensuite bathroom
Appliances	Dryer, Hood Fan, Refrigerator, Storage Shed, Stove-Electric, Washer
Heating	Forced Air-1, Natural Gas
Stories	1
Has Basement	Yes
Basement	Full, Finished

Exterior

Exterior	Wood, Vinyl
Exterior Features	Back Lane, Fenced, Flat Site, Playground Nearby, Public Swimming Pool, Public Transportation, Schools, Shopping Nearby, Ski Hill Nearby
Roof	Asphalt Shingles
Construction	Wood, Vinyl

Foundation Concrete Perimeter

Additional Information

Date Listed January 20th, 2025

Days on Market 53

Zoning Zone 15

DATA IS DEEMED RELIABLE BUT IS NOT GUARANTEED ACCURATE BY THE REALTORS® ASSOCIATION OF EDMONTON. COPYRIGHT 2025 BY THE REALTORS® ASSOCIATION OF EDMONTON. ALL RIGHTS RESERVED. Trademarks are owned or controlled by the Canadian Real Estate Association (CREA) and identify real estate professionals who are members of CREA (REALTOR®, REALTORS®) and/or the quality of services they provide (MLS®, Multiple Listing Service®)

Listing information last updated on March 14th, 2025 at 10:03am MDT