

\$860,000 - 11832 & 11834 124 Street, Edmonton

MLS® #E4418839

\$860,000

6 Bedroom, 5.00 Bathroom, 2,999 sqft
Condo / Townhouse on 0.00 Acres

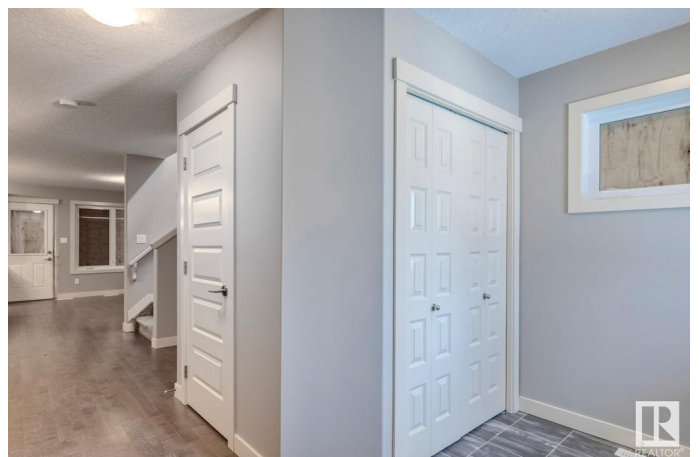
Prince Charles, Edmonton, AB

An exceptional investment opportunity in Prince Charles! On the doorstep of the highly anticipated Blachford development is this Side by side duplex with side entrances and potential for legal basement suites. Create an excellent cash flowing investment property with this never lived in property. Each duplex offers nearly 1500sqft of living space across 2 levels. The main levels each feature a sizable office space, dining room, kitchen, living room, and 2pc bathroom. The upper levels offer 3 spacious bedrooms as well as upstairs laundry. The primary bedroom is equipped with a 3pc ensuite and walk-in closet. Currently the basement is undeveloped but with the side entry, a savvy investor could build out two additional legal suites in the basement to create the ultimate investment property. Market rents suggest a cap rate of greater than 5%!

Built in 2015

Essential Information

MLS® #	E4418839
Price	\$860,000
Bedrooms	6
Bathrooms	5.00
Full Baths	4
Half Baths	2



Square Footage	2,999
Acres	0.00
Year Built	2015
Type	Condo / Townhouse
Sub-Type	Duplex Side By Side
Style	2 Storey
Status	Active

Community Information

Address	11832 & 11834 124 Street
Area	Edmonton
Subdivision	Prince Charles
City	Edmonton
County	ALBERTA
Province	AB
Postal Code	T5L 0M4

Amenities

Amenities	Ceiling 9 ft., No Animal Home
Parking	Double Garage Detached

Interior

Interior Features	ensuite bathroom
Appliances	See Remarks
Heating	Forced Air-1, Natural Gas
Stories	2
Has Basement	Yes
Basement	Full, Unfinished

Exterior

Exterior	Wood, Vinyl
Exterior Features	Back Lane, See Remarks
Roof	Asphalt Shingles
Construction	Wood, Vinyl
Foundation	Concrete Perimeter

Additional Information

Date Listed	January 22nd, 2025
Days on Market	72

Zoning

Zone 04

DATA IS DEEMED RELIABLE BUT IS NOT GUARANTEED ACCURATE BY THE REALTORS® ASSOCIATION OF EDMONTON. COPYRIGHT 2025 BY THE REALTORS® ASSOCIATION OF EDMONTON. ALL RIGHTS RESERVED. Trademarks are owned or controlled by the Canadian Real Estate Association (CREA) and identify real estate professionals who are members of CREA (REALTOR®, REALTORS®) and/or the quality of services they provide (MLS®, Multiple Listing Service®)

Listing information last updated on April 4th, 2025 at 12:17am MDT