

\$164,900 - 111 11620 9a Avenue, Edmonton

MLS® #E4420093

\$164,900

1 Bedroom, 1.00 Bathroom, 654 sqft
Condo / Townhouse on 0.00 Acres

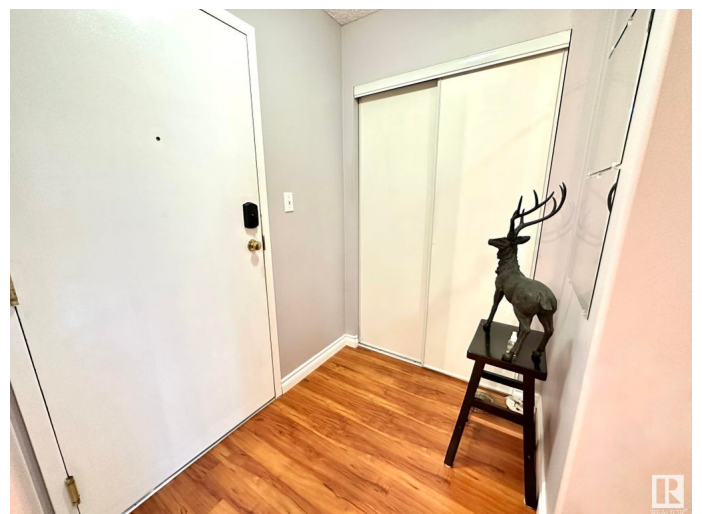
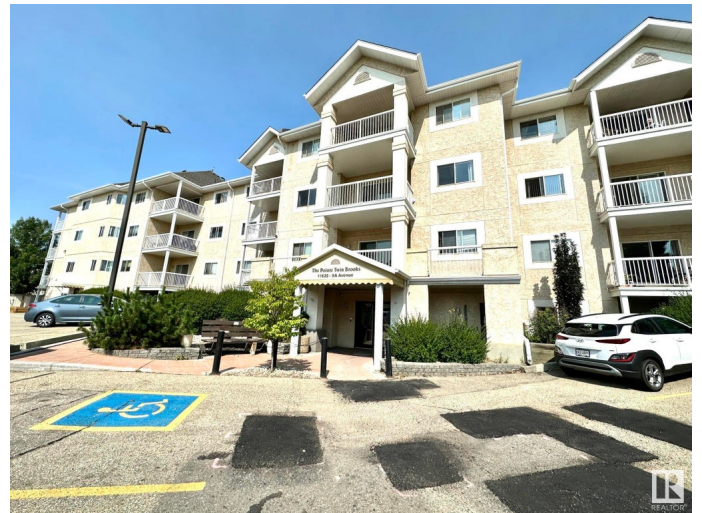
Twin Brooks, Edmonton, AB

Welcome to this impeccably maintained 1-bed, 1-bath condo, perfect for first-time homebuyers! Step inside & be greeted by a modern kitchen featuring newer cabinets, sleek countertops & S/S appliances that blend functionality with flair. The spacious open-concept design is enhanced by thoughtful touches, including in-suite laundry, a renovated bathroom & ample storage. Enjoy your morning coffee on your generously sized patio, a perfect space to relax & soak in the peaceful surroundings. Situated in the serene community of Twin Brooks, immerse yourself in the tranquility of nearby scenic walking & running trails or take in the beauty of a picturesque man-made lake just steps from your door. This prime location offers unparalleled convenience with easy access to the Henday, Hwy 2, YEG Airport, a Rec Center & Century Park LRT station. Shopping, dining & entertainment options abound at the South Common Shopping District. Don't miss the opportunity to make this beautiful home yours!

Built in 1996

Essential Information

MLS® #	E4420093
Price	\$164,900
Bedrooms	1



Bathrooms	1.00
Full Baths	1
Square Footage	654
Acres	0.00
Year Built	1996
Type	Condo / Townhouse
Sub-Type	Lowrise Apartment
Style	Single Level Apartment
Status	Active

Community Information

Address	111 11620 9a Avenue
Area	Edmonton
Subdivision	Twin Brooks
City	Edmonton
County	ALBERTA
Province	AB
Postal Code	T6J 7B4

Amenities

Amenities	Detectors Smoke, Intercom, No Smoking Home, Parking-Visitor, Storage-In-Suite, See Remarks
Parking	Stall

Interior

Appliances	Dishwasher-Built-In, Dryer, Garburator, Microwave Hood Fan, Refrigerator, Stove-Electric, Washer, Window Coverings
Heating	Baseboard, Hot Water, Water
# of Stories	4
Stories	1
Has Basement	Yes
Basement	None, No Basement

Exterior

Exterior	Wood, Stucco
Exterior Features	Airport Nearby, Fenced, Golf Nearby, Playground Nearby, Public Swimming Pool, Public Transportation, Schools, Shopping Nearby, Ski Hill Nearby, See Remarks
Roof	Asphalt Shingles

Construction Wood, Stucco
Foundation Concrete Perimeter

Additional Information

Date Listed February 3rd, 2025
Days on Market 59
Zoning Zone 16
Condo Fee \$324

DATA IS DEEMED RELIABLE BUT IS NOT GUARANTEED ACCURATE BY THE REALTORS® ASSOCIATION OF EDMONTON. COPYRIGHT 2025 BY THE REALTORS® ASSOCIATION OF EDMONTON. ALL RIGHTS RESERVED. Trademarks are owned or controlled by the Canadian Real Estate Association (CREA) and identify real estate professionals who are members of CREA (REALTOR®, REALTORS®) and/or the quality of services they provide (MLS®, Multiple Listing Service®)

Listing information last updated on April 2nd, 2025 at 11:17pm MDT