

## \$70,000 - 103 11250 97 Street, Edmonton

MLS® #E4420280

**\$70,000**

2 Bedroom, 1.00 Bathroom, 612 sqft  
Condo / Townhouse on 0.00 Acres

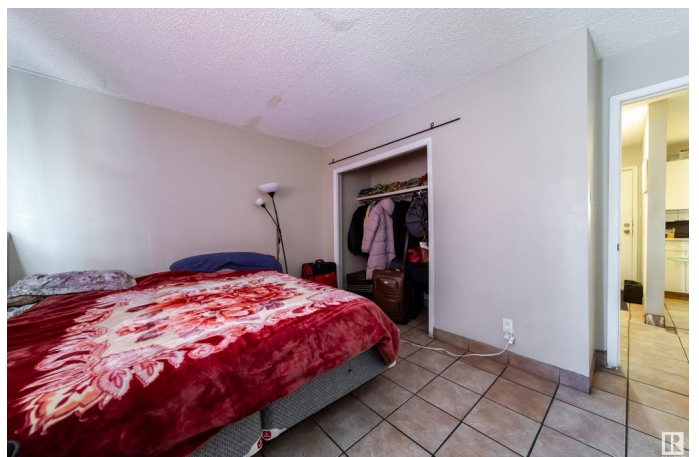
Spruce Avenue, Edmonton, AB

Affordable living close to Downtown, NAIT, Kingsway Mall, the LRT and the Royal Alex Hospital. Convenience and all amenities are at your doorstep. This unit boasts a private patio area and the convenience of 2 bedrooms - the second being perfect for a den/workspace or child's bedroom. A full four piece bath and light cheery kitchen round out this ready to move into home. Perfect for students or people commuting downtown or elsewhere for work, this is economical and easy to maintain as you enjoy an on-site manager, and laundry (coin-operated) is steps from your front door. Parking is included, assigned and electrified.

Built in 1981

### Essential Information

MLS® #	E4420280
Price	\$70,000
Bedrooms	2
Bathrooms	1.00
Full Baths	1
Square Footage	612
Acres	0.00
Year Built	1981
Type	Condo / Townhouse
Sub-Type	Lowrise Apartment
Style	Single Level Apartment



Status Active

### Community Information

Address 103 11250 97 Street  
Area Edmonton  
Subdivision Spruce Avenue  
City Edmonton  
County ALBERTA  
Province AB  
Postal Code T5G 1X1

### Amenities

Amenities Intercom  
Parking Stall

### Interior

Appliances Refrigerator, Stove-Electric  
Heating Hot Water, Natural Gas  
# of Stories 3  
Stories 1  
Has Basement Yes  
Basement None, No Basement

### Exterior

Exterior Wood, Brick, Vinyl  
Exterior Features Flat Site  
Roof Tar & Gravel  
Construction Wood, Brick, Vinyl  
Foundation Concrete Perimeter

### Additional Information

Date Listed February 3rd, 2025  
Days on Market 39  
Zoning Zone 08  
Condo Fee \$473

DATA IS DEEMED RELIABLE BUT IS NOT GUARANTEED ACCURATE BY THE REALTORS® ASSOCIATION OF EDMONTON. COPYRIGHT 2025 BY THE REALTORS® ASSOCIATION OF EDMONTON. ALL RIGHTS RESERVED. Trademarks are owned or controlled by the Canadian Real Estate Association (CREA) and identify real estate professionals who are members of CREA (REALTOR®, REALTORS®) and/or the quality of services they provide (MLS®, Multiple Listing Service®)

Listing information last updated on March 14th, 2025 at 10:17am MDT