

Courtesy Of Fadi Georgi and Megan Benoit Of MaxWell Polaris

# \$439,888 - 1358 Keswick Drive, Edmonton

MLS® #E4420342

**\$439,888**

3 Bedroom, 2.50 Bathroom, 1,455 sqft  
Single Family on 0.00 Acres

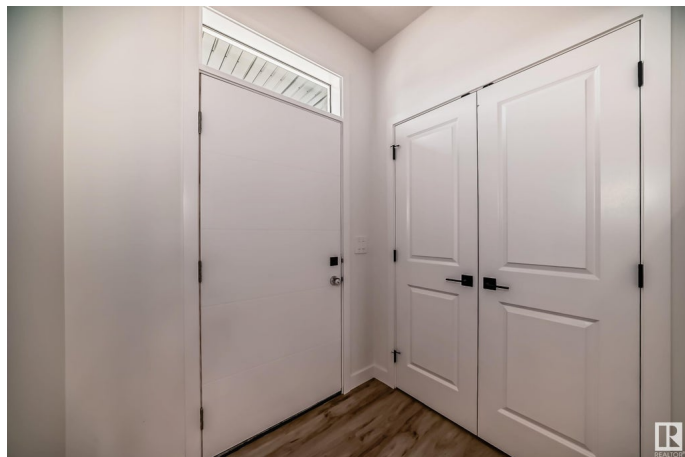
Keswick Area, Edmonton, AB

NO CONDO FEES! Townhome middle unit modern living with a detached double garage. Located in the sought-after community of Keswick, close to parks, trails, and amenities. The open-concept main floor features 3cm quartz countertops, a full-height backsplash, and 42" light wood cabinetry, while upstairs includes a flex space, upper-floor laundry, two bedrooms, and a primary suite with a walk-in closet and 4-piece ensuite. Additional highlights include front and back landscaping and a \$3,000 appliance credit. Under construction tentative completion in May. Photos are from a previous unit; interior colors are represented. HOA TBD

Built in 2024

## Essential Information

MLS® #	E4420342
Price	\$439,888
Bedrooms	3
Bathrooms	2.50
Full Baths	2
Half Baths	1
Square Footage	1,455
Acres	0.00
Year Built	2024
Type	Single Family



Sub-Type	Residential Attached
Style	2 Storey
Status	Active

### **Community Information**

Address	1358 Keswick Drive
Area	Edmonton
Subdivision	Keswick Area
City	Edmonton
County	ALBERTA
Province	AB
Postal Code	T6W 4V8

### **Amenities**

Amenities	Ceiling 9 ft., See Remarks
Parking	Double Garage Detached

### **Interior**

Interior Features	ensuite bathroom
Appliances	Garage Control, Garage Opener, See Remarks
Heating	Forced Air-1, Natural Gas
Stories	2
Has Basement	Yes
Basement	Full, Unfinished

### **Exterior**

Exterior	Wood, Vinyl
Exterior Features	Airport Nearby, Playground Nearby, Public Transportation, Schools, Shopping Nearby, Stream/Pond, See Remarks
Roof	Asphalt Shingles
Construction	Wood, Vinyl
Foundation	Concrete Perimeter

### **Additional Information**

Date Listed	February 5th, 2025
Days on Market	37
Zoning	Zone 56
HOA Fees	1
HOA Fees Freq.	Annually

DATA IS DEEMED RELIABLE BUT IS NOT GUARANTEED ACCURATE BY THE REALTORS® ASSOCIATION OF EDMONTON. COPYRIGHT 2025 BY THE REALTORS® ASSOCIATION OF EDMONTON. ALL RIGHTS RESERVED. Trademarks are owned or controlled by the Canadian Real Estate Association (CREA) and identify real estate professionals who are members of CREA (REALTOR®, REALTORS®) and/or the quality of services they provide (MLS®, Multiple Listing Service®)

Listing information last updated on March 14th, 2025 at 7:47pm MDT