

\$169,000 - 214 111 Watt Common Common, Edmonton

MLS® #E4421508

\$169,000

1 Bedroom, 1.00 Bathroom, 670 sqft

Condo / Townhouse on 0.00 Acres

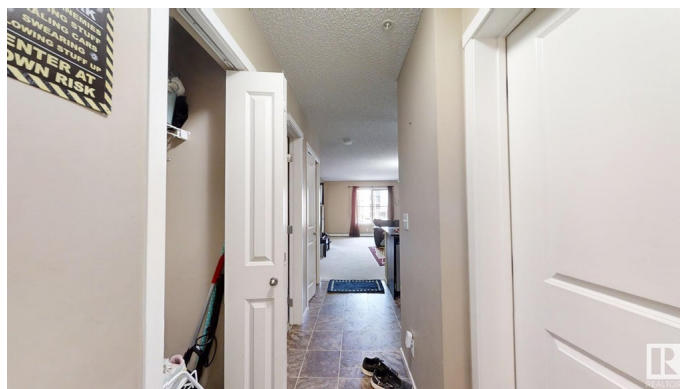
Walker, Edmonton, AB

This 1 Bedroom, 1 Den-Office and 1 Bath Condo in Walker Lakes sounds like a great find !! This property is perfectly located right next to Watt Common Shopping Center, parks, schools and have easy access to Anthony Henday. This suite is perfectly situated with close proximity to Walmart, Superstore, Bus stop And Jr. High School. This Condo features a den that can be utilized as additional bedroom or office. The upgrades to this condo include stainless steel appliances, quartz countertop, in-suite laundry, rough-in for Air conditioner and a good size balcony. There is one outdoor assigned parking stall and a titled parking stall. Perfect opportunity to call this property home or as desirable rental property.

Built in 2014

Essential Information

MLS® #	E4421508
Price	\$169,000
Bedrooms	1
Bathrooms	1.00
Full Baths	1
Square Footage	670
Acres	0.00
Year Built	2014
Type	Condo / Townhouse



Sub-Type	Lowrise Apartment
Style	Single Level Apartment
Status	Active

Community Information

Address	214 111 Watt Common Common
Area	Edmonton
Subdivision	Walker
City	Edmonton
County	ALBERTA
Province	AB
Postal Code	T6X 2C6

Amenities

Amenities	Carbon Monoxide Detectors, Detectors Smoke, No Animal Home, No Smoking Home, Parking-Visitor, Security Door, Vinyl Windows
Parking Spaces	2
Parking	2 Outdoor Stalls

Interior

Appliances	Dishwasher-Built-In, Dryer, Microwave Hood Fan, Refrigerator, Stove-Electric, Washer
Heating	Baseboard, Natural Gas
# of Stories	4
Stories	1
Has Basement	Yes
Basement	None, No Basement

Exterior

Exterior	Wood, Asphalt, Fiber Cement, Vinyl
Exterior Features	Airport Nearby, Golf Nearby, Picnic Area, Playground Nearby, Public Swimming Pool, Public Transportation, Schools, Shopping Nearby
Roof	Asphalt Shingles
Construction	Wood, Asphalt, Fiber Cement, Vinyl
Foundation	Concrete Perimeter

School Information

Elementary	Shauna May Seneca School
Middle	Riverbend School
High	J percy Page School

Additional Information

Date Listed	February 13th, 2025
Days on Market	48
Zoning	Zone 53
Condo Fee	\$355

DATA IS DEEMED RELIABLE BUT IS NOT GUARANTEED ACCURATE BY THE REALTORS® ASSOCIATION OF EDMONTON. COPYRIGHT 2025 BY THE REALTORS® ASSOCIATION OF EDMONTON. ALL RIGHTS RESERVED. Trademarks are owned or controlled by the Canadian Real Estate Association (CREA) and identify real estate professionals who are members of CREA (REALTOR®, REALTORS®) and/or the quality of services they provide (MLS®, Multiple Listing Service®)

Listing information last updated on April 2nd, 2025 at 2:32am MDT