

\$549,900 - 5363 Schonsee Drive, Edmonton

MLS® #E4421771

\$549,900

3 Bedroom, 2.50 Bathroom, 1,838 sqft
Single Family on 0.00 Acres

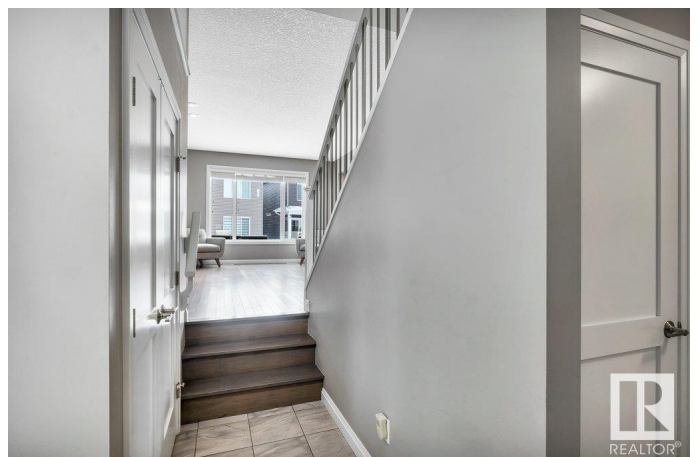
Schonsee, Edmonton, AB

The "Metropolis" by Jayman Built homes is a gorgeous 2-story that will impress you from the moment you arrive. Situated in a cul-de-sac & with a fabulous pie shape lot the location in Schonsee neighbourhood is perfect. Soaring front entry with an open staircase, beautiful hardwood floors, open concept living space with gas fireplace, large, raised eating bar surrounding the gorgeous, upgraded kitchen. Built in oven, gas stove top, hood fan & granite counters will make the home chef smile. Main floor laundry & a heated garage. Upstairs is a large bonus room in the middle of the home with spacious bedrooms on either side. The primary suite offers a walk thru ensuite with soaker tub & stand-up shower. The home is in stunning condition & will be a joy to view.

Built in 2015

Essential Information

MLS® #	E4421771
Price	\$549,900
Bedrooms	3
Bathrooms	2.50
Full Baths	2
Half Baths	1
Square Footage	1,838
Acres	0.00



Year Built	2015
Type	Single Family
Sub-Type	Detached Single Family
Style	2 Storey
Status	Active

Community Information

Address	5363 Schonsee Drive
Area	Edmonton
Subdivision	Schonsee
City	Edmonton
County	ALBERTA
Province	AB
Postal Code	T5Z 0M8

Amenities

Amenities	See Remarks
Parking Spaces	4
Parking	Double Garage Attached, Heated

Interior

Interior Features	ensuite bathroom
Appliances	Dishwasher-Built-In, Dryer, Garage Opener, Hood Fan, Oven-Built-In, Refrigerator, Stove-Countertop Gas, Washer, Window Coverings
Heating	Forced Air-1, Natural Gas
Fireplace	Yes
Fireplaces	Mantel
Stories	2
Has Basement	Yes
Basement	Full, Unfinished

Exterior

Exterior	Wood, Fiber Cement, Stone, Vinyl
Exterior Features	Cul-De-Sac, No Back Lane, Playground Nearby, Public Transportation, Schools
Roof	Asphalt Shingles
Construction	Wood, Fiber Cement, Stone, Vinyl
Foundation	Concrete Perimeter

Additional Information

Date Listed February 14th, 2025

Days on Market 27

Zoning Zone 28

DATA IS DEEMED RELIABLE BUT IS NOT GUARANTEED ACCURATE BY THE REALTORS® ASSOCIATION OF EDMONTON. COPYRIGHT 2025 BY THE REALTORS® ASSOCIATION OF EDMONTON. ALL RIGHTS RESERVED. Trademarks are owned or controlled by the Canadian Real Estate Association (CREA) and identify real estate professionals who are members of CREA (REALTOR®, REALTORS®) and/or the quality of services they provide (MLS®, Multiple Listing Service®)

Listing information last updated on March 12th, 2025 at 11:17pm MDT