

\$515,000 - 123 54 Street, Edmonton

MLS® #E4422019

\$515,000

3 Bedroom, 2.50 Bathroom, 1,626 sqft

Single Family on 0.00 Acres

Charlesworth, Edmonton, AB

Step inside this welcoming home in the heart of Charlesworth, where comfort and style blend seamlessly. Imagine a bright, open living space highlighted by a cozy gas fireplace that invites you to relax after a long day. The spacious kitchen, a true heart of the home, features plenty of cabinets, ample counter space, and a huge walk-through pantry, making everyday cooking a delight. Upstairs, the primary suite offers a private retreat with generous closet space and a full ensuite designed for relaxation. Two additional well-proportioned bedrooms share a beautifully appointed bath, ensuring everyone has a peaceful space to call their own. A fully fenced backyard awaits outside, perfect for summer gatherings, family fun, and outdoor play. A double attached garage adds extra storage and space for your hobbies or vehicles. With grocery stores, schools, parks, and convenient access to major routes and the airport all nearby, this home paints a picture of effortless living in a vibrant, family-friendly com

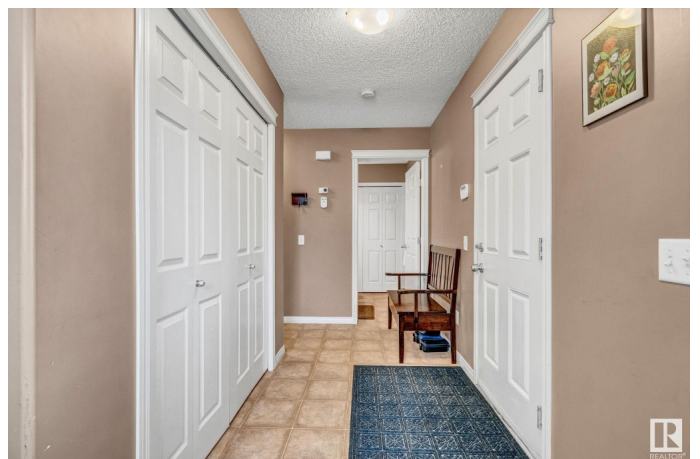
Built in 2011

Essential Information

MLS® # E4422019

Price \$515,000

Bedrooms 3



Bathrooms	2.50
Full Baths	2
Half Baths	1
Square Footage	1,626
Acres	0.00
Year Built	2011
Type	Single Family
Sub-Type	Detached Single Family
Style	2 Storey
Status	Active

Community Information

Address	123 54 Street
Area	Edmonton
Subdivision	Charlesworth
City	Edmonton
County	ALBERTA
Province	AB
Postal Code	T6X 0L3

Amenities

Amenities	Deck, Gazebo, No Smoking Home, Vinyl Windows
Parking Spaces	4
Parking	Double Garage Attached

Interior

Interior Features	ensuite bathroom
Appliances	Dishwasher-Built-In, Dryer, Microwave Hood Fan, Refrigerator, Stove-Electric, Washer, Window Coverings
Heating	Forced Air-1, Natural Gas
Fireplace	Yes
Fireplaces	Tile Surround
Stories	2
Has Basement	Yes
Basement	Full, Partially Finished

Exterior

Exterior	Wood, Stone, Vinyl
Exterior Features	Airport Nearby, Fenced, Flat Site, Golf Nearby, Landscaped, Level Land,

Picnic Area, Playground Nearby, Public Transportation, Schools, Shopping Nearby

Roof Asphalt Shingles
Construction Wood, Stone, Vinyl
Foundation Concrete Perimeter

School Information

Elementary Ellerslie Campus School
Middle Ellerslie Campus School
High Elder Dr. Francis Whiskeyj

Additional Information

Date Listed February 19th, 2025
Days on Market 40
Zoning Zone 53

DATA IS DEEMED RELIABLE BUT IS NOT GUARANTEED ACCURATE BY THE REALTORS® ASSOCIATION OF EDMONTON. COPYRIGHT 2025 BY THE REALTORS® ASSOCIATION OF EDMONTON. ALL RIGHTS RESERVED. Trademarks are owned or controlled by the Canadian Real Estate Association (CREA) and identify real estate professionals who are members of CREA (REALTOR®, REALTORS®) and/or the quality of services they provide (MLS®, Multiple Listing Service®)

Listing information last updated on March 31st, 2025 at 5:02pm MDT