

\$206,500 - 315 5816 Mullen Place, Edmonton

MLS® #E4424005

\$206,500

2 Bedroom, 2.00 Bathroom, 721 sqft
Condo / Townhouse on 0.00 Acres

MacTaggart, Edmonton, AB

Welcome to this wonderfully maintained 2 bedroom, 2 bathroom condo in MacTaggart with 1 titled underground parking stall. Conveniently located close to tons of amenities, schools, parks, and public transportation, it's the perfect fit for any lifestyle. Whether you're buying your first home, downsizing, or looking for an investment, this is a must see!

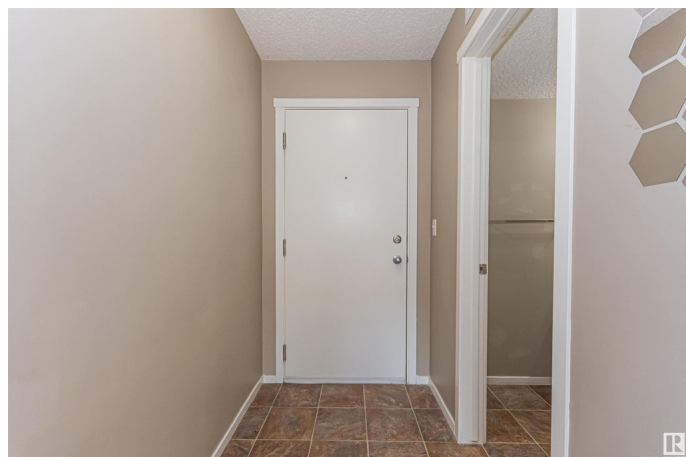
Built in 2016

Essential Information

MLS® #	E4424005
Price	\$206,500
Bedrooms	2
Bathrooms	2.00
Full Baths	2
Square Footage	721
Acres	0.00
Year Built	2016
Type	Condo / Townhouse
Sub-Type	Lowrise Apartment
Style	Single Level Apartment
Status	Active

Community Information

Address	315 5816 Mullen Place
Area	Edmonton



Subdivision	MacTaggart
City	Edmonton
County	ALBERTA
Province	AB
Postal Code	T6R 0W3

Amenities

Amenities	See Remarks
Parking	Underground

Interior

Interior Features	ensuite bathroom
Appliances	Dishwasher-Built-In, Dryer, Hood Fan, Refrigerator, Stove-Electric, Washer
Heating	Baseboard, Water
# of Stories	4
Stories	1
Has Basement	Yes
Basement	None, No Basement

Exterior

Exterior	Wood, Stone, Vinyl
Exterior Features	Golf Nearby, Playground Nearby, Public Transportation, Schools, Shopping Nearby
Roof	Asphalt Shingles
Construction	Wood, Stone, Vinyl
Foundation	Concrete Perimeter

Additional Information

Date Listed	March 5th, 2025
Days on Market	9
Zoning	Zone 14
Condo Fee	\$336

DATA IS DEEMED RELIABLE BUT IS NOT GUARANTEED ACCURATE BY THE REALTORS® ASSOCIATION OF EDMONTON. COPYRIGHT 2025 BY THE REALTORS® ASSOCIATION OF EDMONTON. ALL RIGHTS RESERVED. Trademarks are owned or controlled by the Canadian Real Estate Association (CREA) and identify real estate professionals who are members of CREA (REALTOR®, REALTORS®) and/or the quality of services they provide (MLS®, Multiple Listing Service®)

Listing information last updated on March 14th, 2025 at 4:17pm MDT