

# \$195,000 - 505 4245 139 Avenue, Edmonton

MLS® #E4424021

**\$195,000**

2 Bedroom, 2.00 Bathroom, 834 sqft  
Condo / Townhouse on 0.00 Acres

Clareview Town Centre, Edmonton, AB

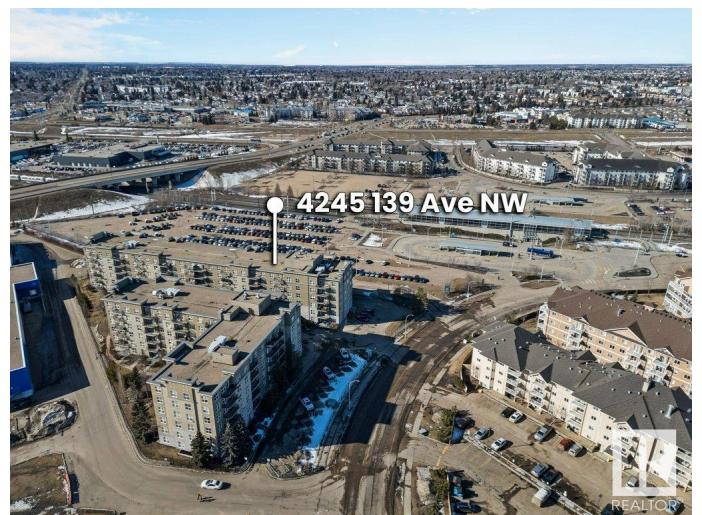
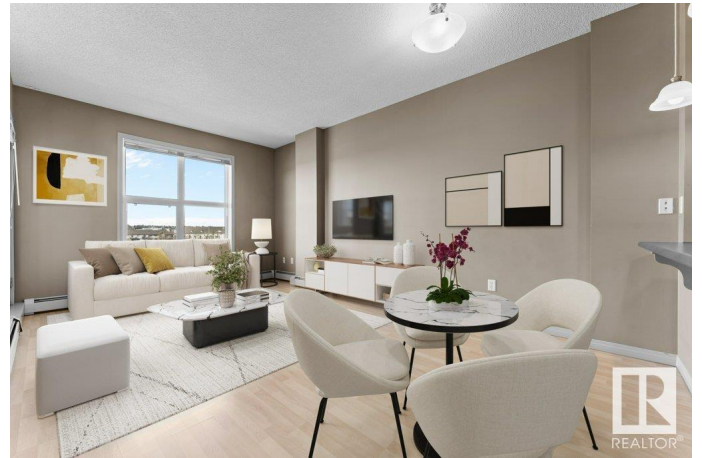
Yo, check this Northeast condo: 830+ sf of straight up dope living. Rollin' with 2 big bedrooms & 2 full baths, this spot's got swagger for days. In-suite laundry keeps your gear fresh, while heated underground parking & storage locker got your back like a loyal crew. Concrete build is the real deal- quiet, solid & built tough. Location's prime fam; right next to the LRT so you're ridin' smooth to downtown. This turf is perfect for keepin' those vibes low key. Buy it for yourself and your crew or as a \$money\$ makin' investment.

Built in 2005

## Essential Information

MLS® #	E4424021
Price	\$195,000
Bedrooms	2
Bathrooms	2.00
Full Baths	2
Square Footage	834
Acres	0.00
Year Built	2005
Type	Condo / Townhouse
Sub-Type	Lowrise Apartment
Style	Single Level Apartment
Status	Active

## Community Information



Address	505 4245 139 Avenue
Area	Edmonton
Subdivision	Clareview Town Centre
City	Edmonton
County	ALBERTA
Province	AB
Postal Code	T5Y 3E8

### **Amenities**

Amenities	Ceiling 9 ft., Gazebo, No Animal Home, No Smoking Home, Parking-Visitor, Secured Parking, Security Door, Storage-Locker Room, Vinyl Windows, Natural Gas BBQ Hookup
Parking Spaces	1
Parking	Heated, Underground

### **Interior**

Interior Features	ensuite bathroom
Appliances	Dishwasher-Built-In, Dryer, Microwave Hood Fan, Refrigerator, Stove-Electric, Washer, Window Coverings
Heating	Baseboard, Natural Gas
# of Stories	6
Stories	1
Has Basement	Yes
Basement	None, No Basement

### **Exterior**

Exterior	Concrete, Stone, Stucco
Exterior Features	Public Transportation, Schools, Shopping Nearby, View City, View Downtown
Roof	Tar & Gravel
Construction	Concrete, Stone, Stucco
Foundation	Concrete Perimeter

### **Additional Information**

Date Listed	March 5th, 2025
Days on Market	9
Zoning	Zone 35
Condo Fee	\$575

DATA IS DEEMED RELIABLE BUT IS NOT GUARANTEED ACCURATE BY THE REALTORS® ASSOCIATION OF EDMONTON. COPYRIGHT 2025 BY THE REALTORS® ASSOCIATION OF EDMONTON. ALL RIGHTS

RESERVED. Trademarks are owned or controlled by the Canadian Real Estate Association (CREA) and identify real estate professionals who are members of CREA (REALTOR®®, REALTORS®®) and/or the quality of services they provide (MLS®®, Multiple Listing Service®®)

Listing information last updated on March 14th, 2025 at 10:17am MDT