

Courtesy Of Rhonda C Navratil Of RE/MAX River City

\$849,900 - 568 Stewart Crescent, Edmonton

MLS® #E4424368

\$849,900

4 Bedroom, 3.50 Bathroom, 2,539 sqft

Single Family on 0.00 Acres

Summerside, Edmonton, AB

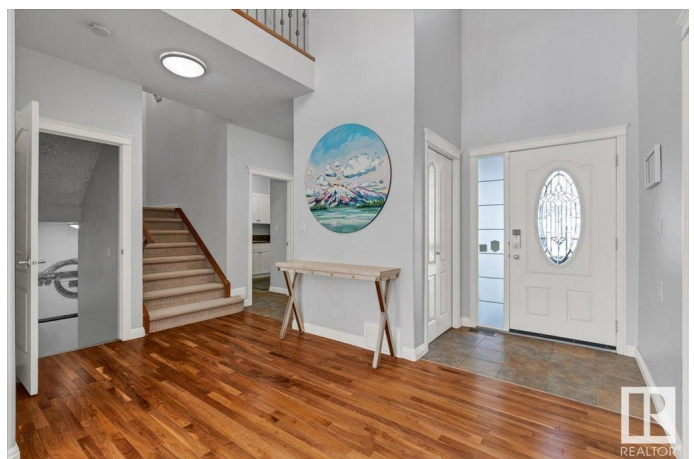
Executive Jayman Master Built 2540 sq ft with oversized heated TRIPLE CAR GARAGE + extended driveway on quiet cul de sac in Lake Summerside. Short walk to the pond, walking paths & FMM Catholic K-9 school or the Beach Club at the Lake. Bright open floor plan with 9'™ main floor ceilings + 2 storey entry & perfect main floor office and the 'sanity saver' mudroom. Sunny kitchen dining area leads to your gorgeous 2 tier maintenance free Trex deck. This home is designed for entertaining, Great room flows seamlessly from the Gourmet Kitchen with huge granite Island & walk-in pantry. Primary suite is king sized with separate vanities, soaker tub, double shower, toilet closet & huge walk-in closet! Secondary bedrooms are bright & spacious + one has a walk-in closet. Professionally finished basement with gym, Game Night fun is on in the sound proofed media room with wet bar, 4th bedroom. BuiltGreen Alberta energy efficient home & tankless HWT. You will love your new home & living the lake lifestyle year round!

Built in 2006

Essential Information

MLS® # E4424368

Price \$849,900



| | |
|----------------|------------------------|
| Bedrooms | 4 |
| Bathrooms | 3.50 |
| Full Baths | 3 |
| Half Baths | 1 |
| Square Footage | 2,539 |
| Acres | 0.00 |
| Year Built | 2006 |
| Type | Single Family |
| Sub-Type | Detached Single Family |
| Style | 2 Storey |
| Status | Active |

Community Information

| | |
|-------------|----------------------|
| Address | 568 Stewart Crescent |
| Area | Edmonton |
| Subdivision | Summerside |
| City | Edmonton |
| County | ALBERTA |
| Province | AB |
| Postal Code | T6X 1B6 |

Amenities

| | |
|----------------|-------------------------------------------------------------------------------------------------------------------------------------|
| Amenities | Air Conditioner, Barbecue-Built-In, Ceiling 9 ft., Closet Organizers, Club House, Deck, Exercise Room, Lake Privileges, See Remarks |
| Parking Spaces | 6 |
| Parking | Heated, Over Sized, Triple Garage Attached |

Interior

| | |
|-------------------|-----------------------------------------------------------------------------------------------------------------------------------------------------------------------------------------------------------------------------------------------------------------|
| Interior Features | ensuite bathroom |
| Appliances | Air Conditioning-Central, Dishwasher-Built-In, Dryer, Garage Control, Garage Opener, Garburator, Humidifier-Power(Furnace), Oven-Built-In, Oven-Microwave, Storage Shed, Stove-Countertop Electric, Vacuum Systems, Washer, Window Coverings, Refrigerators-Two |
| Heating | Forced Air-1, Natural Gas |
| Fireplace | Yes |
| Fireplaces | Mantel, Stone Facing, Tile Surround |
| Stories | 3 |
| Has Basement | Yes |
| Basement | Full, Finished |

Exterior

| | |
|-------------------|----------------------------------------------------------------------------------------------------------------------------------------------------------------------------------------------------|
| Exterior | Wood, Stone, Vinyl |
| Exterior Features | Beach Access, Boating, Fenced, Golf Nearby, Lake Access Property, Landscaped, Picnic Area, Playground Nearby, Public Transportation, Recreation Use, Schools, Shopping Nearby, Private Park Access |
| Roof | Asphalt Shingles |
| Construction | Wood, Stone, Vinyl |
| Foundation | Concrete Perimeter |

School Information

| | |
|------------|---------------------------|
| Elementary | Jan Reimer School K-6 |
| Middle | Jan Reimer School 7-9 |
| High | J.Percy Page/Holy Trinity |

Additional Information

| | |
|----------------|-----------------|
| Date Listed | March 5th, 2025 |
| Days on Market | 9 |
| Zoning | Zone 53 |
| HOA Fees | 453.02 |
| HOA Fees Freq. | Annually |

DATA IS DEEMED RELIABLE BUT IS NOT GUARANTEED ACCURATE BY THE REALTORS® ASSOCIATION OF EDMONTON. COPYRIGHT 2025 BY THE REALTORS® ASSOCIATION OF EDMONTON. ALL RIGHTS RESERVED. Trademarks are owned or controlled by the Canadian Real Estate Association (CREA) and identify real estate professionals who are members of CREA (REALTOR®, REALTORS®) and/or the quality of services they provide (MLS®, Multiple Listing Service®)

Listing information last updated on March 14th, 2025 at 12:47pm MDT