

\$485,000 - 55 Avebury Court, Sherwood Park

MLS® #E4425089

\$485,000

4 Bedroom, 3.50 Bathroom, 1,519 sqft
Single Family on 0.00 Acres

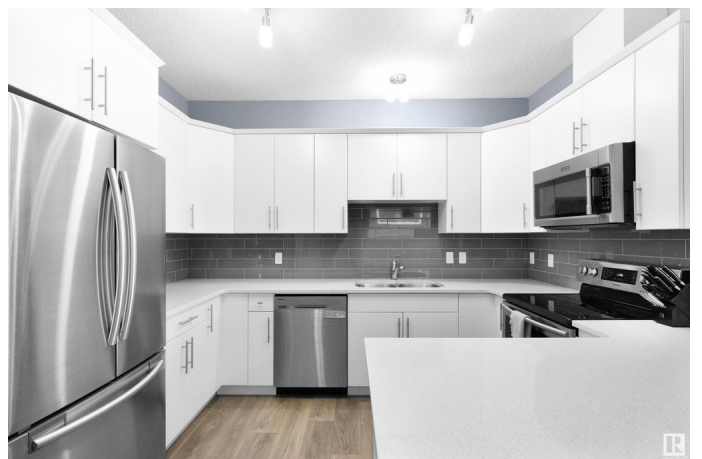
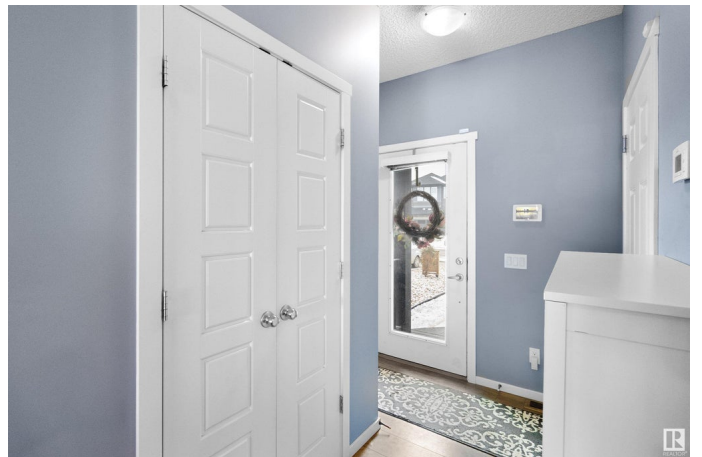
Aspen Trails, Sherwood Park, AB

Nestled on a quiet cul-de-dac in the sought after community of Aspen Trails, you find this beautiful and fully finished 1500 square foot half-duplex. Entertain on the open main floor complete with gorgeous kitchen, large dining area, spacious living room 2 pce bath, with access to the deck. Upstairs you will find a large master suite featuring large walk in closet and 4 pce ensuite, 2 additional bedrooms, full bathroom and laundry room. The basement was PROFESSIONALLY developed by the builder and completes this home with a TV/rec room area, a 4th bedroom, 3 pce bathroom and small flex space.... perfect for a home office or meditation space. All of this, close to shopping, walking distance to Abbey Road playground and walking trails.

Built in 2016

Essential Information

| | |
|----------------|-----------|
| MLS® # | E4425089 |
| Price | \$485,000 |
| Bedrooms | 4 |
| Bathrooms | 3.50 |
| Full Baths | 3 |
| Half Baths | 1 |
| Square Footage | 1,519 |
| Acres | 0.00 |



| | |
|------------|---------------|
| Year Built | 2016 |
| Type | Single Family |
| Sub-Type | Half Duplex |
| Style | 2 Storey |
| Status | Active |

Community Information

| | |
|-------------|------------------|
| Address | 55 Avebury Court |
| Area | Sherwood Park |
| Subdivision | Aspen Trails |
| City | Sherwood Park |
| County | ALBERTA |
| Province | AB |
| Postal Code | T8H 0Z3 |

Amenities

| | |
|-----------|------------------------|
| Amenities | See Remarks |
| Parking | Double Garage Attached |

Interior

| | |
|-------------------|--|
| Interior Features | ensuite bathroom |
| Appliances | Dishwasher-Built-In, Dryer, Microwave Hood Fan, Refrigerator, Stove-Electric, Washer, Window Coverings |
| Heating | Forced Air-1, Natural Gas |
| Stories | 3 |
| Has Basement | Yes |
| Basement | Full, Finished |

Exterior

| | |
|-------------------|--------------------|
| Exterior | Wood, Vinyl |
| Exterior Features | See Remarks |
| Roof | Asphalt Shingles |
| Construction | Wood, Vinyl |
| Foundation | Concrete Perimeter |

Additional Information

| | |
|----------------|------------------|
| Date Listed | March 11th, 2025 |
| Days on Market | 23 |
| Zoning | Zone 25 |

DATA IS DEEMED RELIABLE BUT IS NOT GUARANTEED ACCURATE BY THE REALTORS® ASSOCIATION OF EDMONTON. COPYRIGHT 2025 BY THE REALTORS® ASSOCIATION OF EDMONTON. ALL RIGHTS RESERVED. Trademarks are owned or controlled by the Canadian Real Estate Association (CREA) and identify real estate professionals who are members of CREA (REALTOR®, REALTORS®) and/or the quality of services they provide (MLS®, Multiple Listing Service®)

Listing information last updated on April 3rd, 2025 at 7:32am MDT