

\$589,000 - 3363 25 Avenue, Edmonton

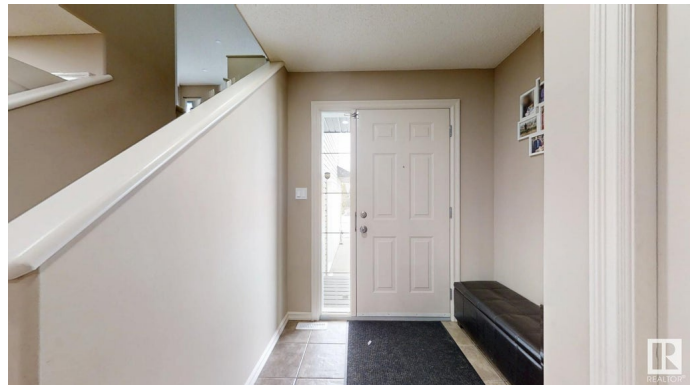
MLS® #E4425571

\$589,000

4 Bedroom, 3.50 Bathroom, 1,850 sqft
Single Family on 0.00 Acres

Silver Berry, Edmonton, AB

****FINISHED BASEMENT WITH SECOND KITCHEN**** Welcome to your dream home in Silver Berry, a vibrant and picturesque community in South Edmonton! This stunning 2 Story home features an open concept kitchen with plenty of cabinet space and stainless steel appliances on Main Floor , Living Room boasts oversized windows allowing ample sunlight ,2 pc Washroom, Dining area and Laundry .Upper Level includes Huge Bonus Room providing great space for relaxation and entertainment. The master bedroom comes with a 4PC ensuite ,walk in closet, Two more well-sized bedrooms and another Full washroom completes the upper level. Fully finished basement has a second kitchen, along with Family room, One Bedroom and full washroom with SEPERATE ENTRANCE through Garage. Central air conditioning, Central Vacuum, Huge deck and attractive landscaping. This home offers both comfort and functionality.



Built in 2004

Essential Information

MLS® #	E4425571
Price	\$589,000
Bedrooms	4
Bathrooms	3.50

Full Baths	3
Half Baths	1
Square Footage	1,850
Acres	0.00
Year Built	2004
Type	Single Family
Sub-Type	Detached Single Family
Style	2 Storey
Status	Active

Community Information

Address	3363 25 Avenue
Area	Edmonton
Subdivision	Silver Berry
City	Edmonton
County	ALBERTA
Province	AB
Postal Code	T6T 1Y4

Amenities

Amenities	Air Conditioner, Deck, No Animal Home, No Smoking Home
Parking Spaces	4
Parking	Double Garage Attached

Interior

Interior Features	ensuite bathroom
Appliances	Air Conditioning-Central, Dishwasher-Built-In, Dryer, Garage Opener, Storage Shed, Vacuum System Attachments, Washer, Refrigerators-Two, Stoves-Two, Curtains and Blinds
Heating	Forced Air-1, Natural Gas
Stories	3
Has Basement	Yes
Basement	Full, Finished

Exterior

Exterior	Wood, Vinyl
Exterior Features	Landscaped
Roof	Asphalt Shingles
Construction	Wood, Vinyl

Foundation Concrete Perimeter

School Information

Elementary Bisset School
Middle Rosslyn School
High W P Wagner School

Additional Information

Date Listed March 13th, 2025
Days on Market 22
Zoning Zone 30

DATA IS DEEMED RELIABLE BUT IS NOT GUARANTEED ACCURATE BY THE REALTORS® ASSOCIATION OF EDMONTON. COPYRIGHT 2025 BY THE REALTORS® ASSOCIATION OF EDMONTON. ALL RIGHTS RESERVED. Trademarks are owned or controlled by the Canadian Real Estate Association (CREA) and identify real estate professionals who are members of CREA (REALTOR®, REALTORS®) and/or the quality of services they provide (MLS®, Multiple Listing Service®)

Listing information last updated on April 4th, 2025 at 11:17am MDT