

# \$289,980 - 143 219 Charlotte Way, Sherwood Park

MLS® #E4427587

**\$289,980**

4 Bedroom, 3.50 Bathroom, 1,127 sqft  
Condo / Townhouse on 0.00 Acres

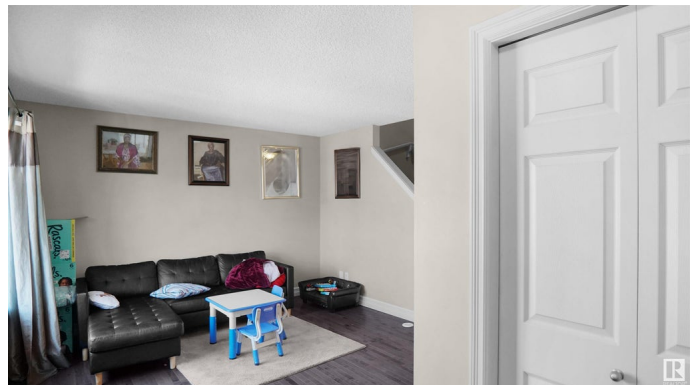
Lakeland Ridge, Sherwood Park, AB

This is the perfect starter home or a seasoned investor. This lovely townhome is located in Lakeland Ridge. The main floor offers a good sized living room, kitchen with nook area and access to deck and fenced off yard which backs the green space. The main floor level also has a 2 piece bath. The upper level has the primary bedroom with an large closet and a full 4 piece bath. The additional 2 bedrooms are a good size and share another 4 piece bath which complete the second level The fully finished basement has a full size bedroom a large rec room and a 3 piece bath. Lakeland Ridge is a well maintained complex with a low condo offering visitor parking and is walking distance to parks, schools and walking trails. Easy access to the yellowhead.

Built in 2012

## Essential Information

MLS® #	E4427587
Price	\$289,980
Bedrooms	4
Bathrooms	3.50
Full Baths	3
Half Baths	1
Square Footage	1,127
Acres	0.00



Year Built	2012
Type	Condo / Townhouse
Sub-Type	Townhouse
Style	2 Storey
Status	Active

### **Community Information**

Address	143 219 Charlotte Way
Area	Sherwood Park
Subdivision	Lakeland Ridge
City	Sherwood Park
County	ALBERTA
Province	AB
Postal Code	T8H 0T3

### **Amenities**

Amenities	See Remarks
Parking Spaces	2
Parking	2 Outdoor Stalls

### **Interior**

Interior Features	ensuite bathroom
Appliances	Dishwasher-Built-In, Dryer, Refrigerator, Stove-Electric, Washer, Window Coverings
Heating	Forced Air-1, Heat Pump, Natural Gas
Stories	3
Has Basement	Yes
Basement	Full, Finished

### **Exterior**

Exterior	Wood, Vinyl
Exterior Features	Fenced, Golf Nearby, Landscaped, Playground Nearby, Public Swimming Pool, Public Transportation, Schools, Shopping Nearby, See Remarks
Roof	Asphalt Shingles
Construction	Wood, Vinyl
Foundation	Concrete Perimeter

### **Additional Information**

Date Listed	March 26th, 2025
-------------	------------------

Days on Market	8
Zoning	Zone 25
Condo Fee	\$227

DATA IS DEEMED RELIABLE BUT IS NOT GUARANTEED ACCURATE BY THE REALTORS® ASSOCIATION OF EDMONTON. COPYRIGHT 2025 BY THE REALTORS® ASSOCIATION OF EDMONTON. ALL RIGHTS RESERVED. Trademarks are owned or controlled by the Canadian Real Estate Association (CREA) and identify real estate professionals who are members of CREA (REALTOR®, REALTORS®) and/or the quality of services they provide (MLS®, Multiple Listing Service®)

Listing information last updated on April 3rd, 2025 at 7:02am MDT