

\$249,000 - 110 5 St Louis Street, St. Albert

MLS® #E4428562

\$249,000

1 Bedroom, 1.00 Bathroom, 700 sqft

Condo / Townhouse on 0.00 Acres

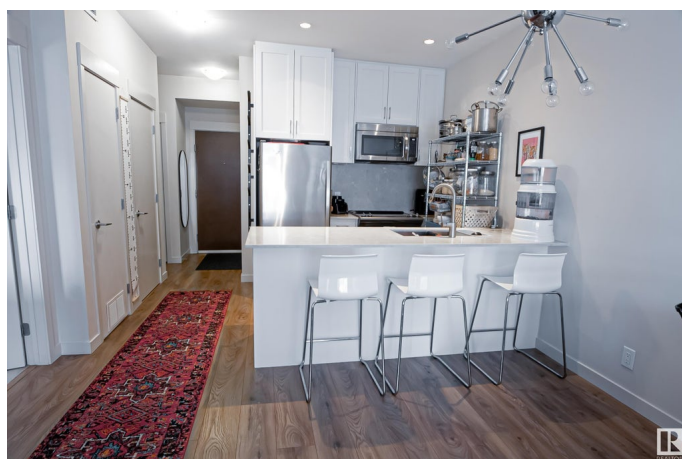
Grandin, St. Albert, AB

This stunning one-bedroom apartment, located on the main floor, features a private patio overlooking a serene park in the prestigious downtown of St. Albert. Inside, the open-concept kitchen and living room boast sleek quartz countertops, up-to-ceiling cabinets, stainless steel built-in appliances and modern finishes, perfect for both cooking and entertaining. The apartment also includes a versatile den, ideal for an office or quiet retreat, and a spacious bedroom with a walk-in closet. Enjoy year-round comfort with in-unit AC. Additional amenities include underground parking, private storage, a gym, and a common room for your convenience. Experience the perfect blend of luxury and practicality in one of the most desirable areas of the city.

Built in 2017

Essential Information

MLS® #	E4428562
Price	\$249,000
Bedrooms	1
Bathrooms	1.00
Full Baths	1
Square Footage	700
Acres	0.00
Year Built	2017



Type	Condo / Townhouse
Sub-Type	Lowrise Apartment
Style	Single Level Apartment
Status	Active

Community Information

Address	110 5 St Louis Street
Area	St. Albert
Subdivision	Grandin
City	St. Albert
County	ALBERTA
Province	AB
Postal Code	T8N 7T2

Amenities

Amenities	On Street Parking, Air Conditioner, Detectors Smoke, Exercise Room, Intercom, No Smoking Home, Party Room, Patio, Recreation Room/Centre, Secured Parking, Security Door, Social Rooms, Storage Cage
Parking	Heated, Underground

Interior

Interior Features	ensuite bathroom
Appliances	Air Conditioning-Central, Dishwasher-Built-In, Garage Opener, Microwave Hood Fan, Refrigerator, Stacked Washer/Dryer, Stove-Electric
Heating	Heat Pump, Natural Gas
# of Stories	5
Stories	1
Has Basement	Yes
Basement	None, No Basement

Exterior

Exterior	Wood, Brick, Stucco
Exterior Features	Backs Onto Park/Trees, Golf Nearby, Playground Nearby, Public Transportation, Schools, Shopping Nearby
Roof	EPDM Membrane, Flat
Construction	Wood, Brick, Stucco
Foundation	Concrete Perimeter

Additional Information

Date Listed	April 2nd, 2025
Days on Market	16
Zoning	Zone 24
Condo Fee	\$489

DATA IS DEEMED RELIABLE BUT IS NOT GUARANTEED ACCURATE BY THE REALTORS® ASSOCIATION OF EDMONTON. COPYRIGHT 2025 BY THE REALTORS® ASSOCIATION OF EDMONTON. ALL RIGHTS RESERVED. Trademarks are owned or controlled by the Canadian Real Estate Association (CREA) and identify real estate professionals who are members of CREA (REALTOR®, REALTORS®) and/or the quality of services they provide (MLS®, Multiple Listing Service®)

Listing information last updated on April 17th, 2025 at 11:17pm MDT