

Courtesy Of Zara Sultani and Waheed Mayell Of MaxWell Polaris

\$299,900 - 414 2510 109 Street, Edmonton

MLS® #E4428925

\$299,900

1 Bedroom, 1.00 Bathroom, 823 sqft
Condo / Townhouse on 0.00 Acres

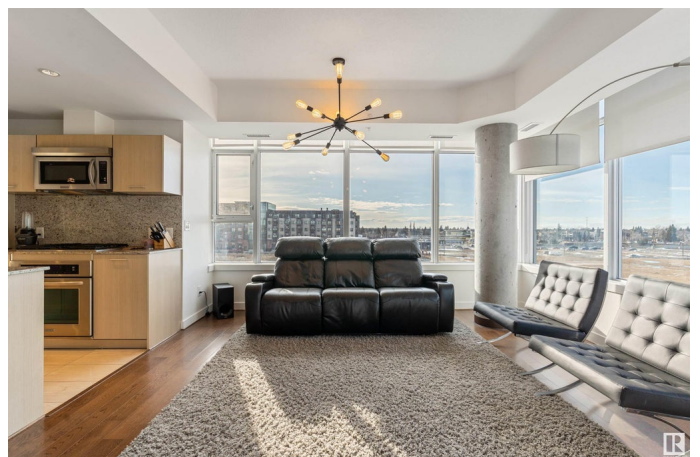
Ermineskin, Edmonton, AB

Welcome to LUXURY & CONVENIENCE at One Century Park! This air-conditioned loft style corner unit has wall to wall windows, gourmet kitchen with granite countertops, stainless steel appliances with a gas stove and a large island perfect for entertaining or watching the sunset! The custom cabinets are unique to this unit with mini fridge, functional storage and upgraded lights. There is an electrical fireplace to set the mood and a balcony with a gas line for all your BBQ & good times. The sizable bedroom has a walkthrough closet to your spa bathroom with both shower and soaker tub. Visitors can enjoy their stay too with exercise facilities, while parking in the underground parkade alongside your titled parking spot and personal storage. Steps away from Century Park LRT, the YMCA, major highways and more!

Built in 2008

Essential Information

MLS® #	E4428925
Price	\$299,900
Bedrooms	1
Bathrooms	1.00
Full Baths	1
Square Footage	823
Acres	0.00



Year Built	2008
Type	Condo / Townhouse
Sub-Type	Lowrise Apartment
Style	Loft
Status	Active

Community Information

Address	414 2510 109 Street
Area	Edmonton
Subdivision	Ermineskin
City	Edmonton
County	ALBERTA
Province	AB
Postal Code	T6J 2X1

Amenities

Amenities	Air Conditioner, Ceiling 9 ft., Exercise Room, Parking-Visitor, Patio, Secured Parking, Security Door, Sprinkler System-Fire, Wall Unit-Built-In, See Remarks, Storage Cage, Natural Gas BBQ Hookup
Parking	Underground

Interior

Interior Features	ensuite bathroom
Appliances	Dishwasher-Built-In, Dryer, Garage Opener, Microwave Hood Fan, Oven-Built-In, Refrigerator, Stove-Countertop Gas, Washer, Window Coverings
Heating	Heat Pump, Natural Gas
Fireplace	Yes
Fireplaces	Tile Surround
# of Stories	7
Stories	7
Has Basement	Yes
Basement	None, No Basement

Exterior

Exterior	Concrete, Brick, Metal
Exterior Features	Landscaped, Playground Nearby, Public Transportation, Recreation Use, Schools, Shopping Nearby, See Remarks
Roof	See Remarks
Construction	Concrete, Brick, Metal

Foundation Concrete Perimeter

School Information

Elementary Steinhauer
Middle D.S. MacKenzie
High Harry Ainlay School

Additional Information

Date Listed April 3rd, 2025
Days on Market 9
Zoning Zone 16
Condo Fee \$772

DATA IS DEEMED RELIABLE BUT IS NOT GUARANTEED ACCURATE BY THE REALTORS® ASSOCIATION OF EDMONTON. COPYRIGHT 2025 BY THE REALTORS® ASSOCIATION OF EDMONTON. ALL RIGHTS RESERVED. Trademarks are owned or controlled by the Canadian Real Estate Association (CREA) and identify real estate professionals who are members of CREA (REALTOR®, REALTORS®) and/or the quality of services they provide (MLS®, Multiple Listing Service®)

Listing information last updated on April 12th, 2025 at 1:47am MDT