

\$799,900 - 10068 90 Avenue, Edmonton

MLS® #E4430741

\$799,900

1 Bedroom, 0.00 Bathroom, 998 sqft
Single Family on 0.00 Acres

Strathcona, Edmonton, AB

Endless Potential with Breathtaking Views!
Rare opportunity to own a lot in one of the city's most sought-after locations. This 32 ft x 131 ft property offers the perfect canvas to build your dream home, with unobstructed views of downtown, the iconic Walterdale Bridge, and the historic Rosedale Water Treatment Plant. Nestled in a prime neighborhood, lots like this don't come up often—don't miss your chance to create something truly special.

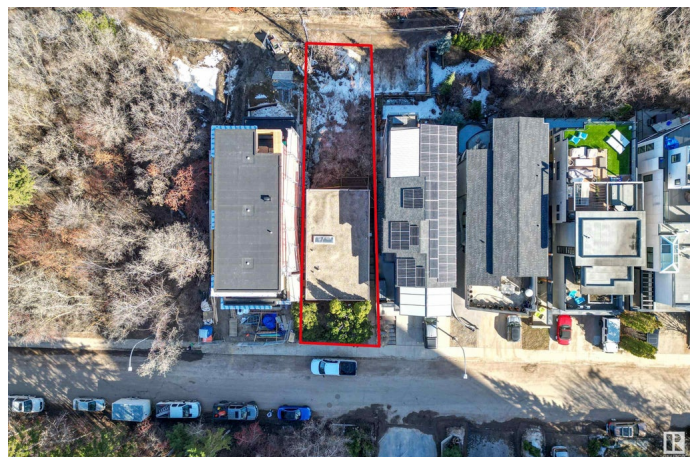
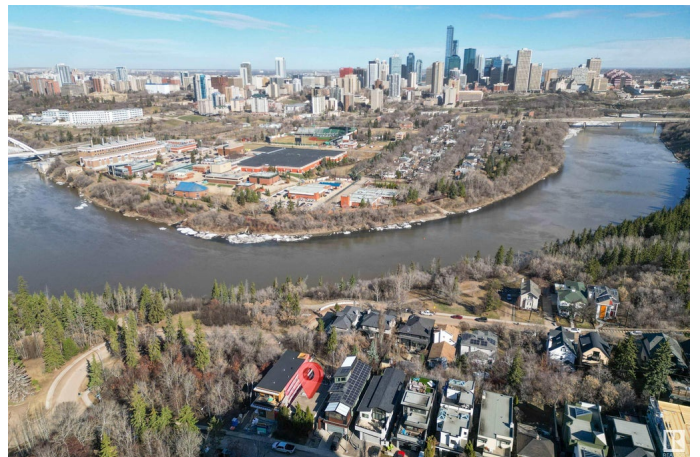
Built in 1963

Essential Information

MLS® #	E4430741
Price	\$799,900
Bedrooms	1
Bathrooms	0.00
Square Footage	998
Acres	0.00
Year Built	1963
Type	Single Family
Sub-Type	Detached Single Family
Style	2 Storey
Status	Active

Community Information

Address 10068 90 Avenue



Area	Edmonton
Subdivision	Strathcona
City	Edmonton
County	ALBERTA
Province	AB
Postal Code	T6E 4X1

Amenities

Amenities	See Remarks
Parking	Front/Rear Drive Access

Interior

Appliances	None
Heating	Forced Air-1, Natural Gas
Stories	2
Has Basement	Yes
Basement	Full, Unfinished

Exterior

Exterior	Wood, Brick, Stucco
Exterior Features	Golf Nearby, Hillside, Park/Reserve, Ravine View, River Valley View, Schools, Shopping Nearby, Ski Hill Nearby, Sloping Lot, View Downtown, See Remarks
Roof	Tar & Gravel
Construction	Wood, Brick, Stucco
Foundation	Concrete Perimeter

Additional Information

Date Listed	April 14th, 2025
Days on Market	5
Zoning	Zone 15

DATA IS DEEMED RELIABLE BUT IS NOT GUARANTEED ACCURATE BY THE REALTORS® ASSOCIATION OF EDMONTON. COPYRIGHT 2025 BY THE REALTORS® ASSOCIATION OF EDMONTON. ALL RIGHTS RESERVED. Trademarks are owned or controlled by the Canadian Real Estate Association (CREA) and identify real estate professionals who are members of CREA (REALTOR®, REALTORS®) and/or the quality of services they provide (MLS®, Multiple Listing Service®)

Listing information last updated on April 19th, 2025 at 8:47am MDT