

\$564,900 - 1116 111a Street, Edmonton

MLS® #E4432626

\$564,900

5 Bedroom, 3.00 Bathroom, 1,555 sqft

Single Family on 0.00 Acres

Twin Brooks, Edmonton, AB

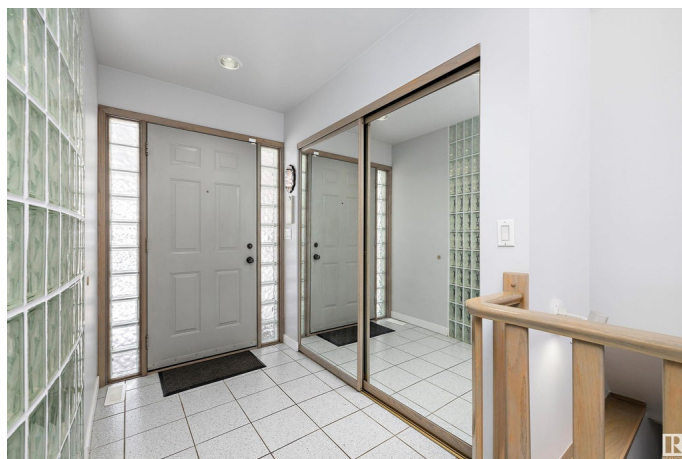
This stunning bungalow in the sought-after Twin Brooks neighbourhood boasts 2,883 sq ft of living space, with 5-bedrooms & 3-bathrooms. Entering this one-of-a-kind home you are greeted by a feature glass-block wall, and an abundance of light from the multiple windows that surround the kitchen & living room with its vaulted ceiling. The spacious kitchen features sleek quartz countertops, and built-in island seating, ideal for both cooking and entertaining. The master bedroom offers a walk-in closet, fabulous ensuite w/ large soaker tub & separate shower, and direct access to the backyard. The fully finished basement offers 2 large bedrooms, a 3-piece bath, and expansive family room complete with a wet-bar. Enjoy the spacious backyard with large deck, mature trees, fire pit, and a tranquil water feature - your own private retreat. Recent upgrades include a new air conditioner, furnace, and water heater for added peace of mind. A perfect home for families or those who love to host. Don't miss out!

Built in 1989

Essential Information

MLS® # E4432626

Price \$564,900



Bedrooms	5
Bathrooms	3.00
Full Baths	3
Square Footage	1,555
Acres	0.00
Year Built	1989
Type	Single Family
Sub-Type	Detached Single Family
Style	Bungalow
Status	Active

Community Information

Address	1116 111a Street
Area	Edmonton
Subdivision	Twin Brooks
City	Edmonton
County	ALBERTA
Province	AB
Postal Code	T6J 6R9

Amenities

Amenities	Air Conditioner, Deck, Fire Pit, Vaulted Ceiling
Parking	Double Garage Attached

Interior

Interior Features	ensuite bathroom
Appliances	Dishwasher-Built-In, Dryer, Fan-Ceiling, Garage Control, Garage Opener, Oven-Microwave, Refrigerator, Stove-Electric, Vacuum System Attachments, Vacuum Systems, Washer, Window Coverings
Heating	Forced Air-1, Natural Gas
Fireplace	Yes
Fireplaces	Glass Door
Stories	2
Has Basement	Yes
Basement	Full, Finished

Exterior

Exterior	Wood, Vinyl
Exterior Features	Cul-De-Sac, Fenced, Golf Nearby, Landscaped, No Back Lane, No

Through Road, Playground Nearby, Public Swimming Pool, Public Transportation, Schools, Shopping Nearby

Roof	Asphalt Shingles
Construction	Wood, Vinyl
Foundation	Concrete Perimeter

School Information

Elementary	G.P. Nicholson, St Teresa
Middle	DS Mackenzie, Louis St L
High	Harry Ainlay, LSL

Additional Information

Date Listed	April 24th, 2025
Days on Market	5
Zoning	Zone 16

DATA IS DEEMED RELIABLE BUT IS NOT GUARANTEED ACCURATE BY THE REALTORS® ASSOCIATION OF EDMONTON. COPYRIGHT 2025 BY THE REALTORS® ASSOCIATION OF EDMONTON. ALL RIGHTS RESERVED. Trademarks are owned or controlled by the Canadian Real Estate Association (CREA) and identify real estate professionals who are members of CREA (REALTOR®, REALTORS®) and/or the quality of services they provide (MLS®, Multiple Listing Service®)

Listing information last updated on April 29th, 2025 at 8:17pm MDT